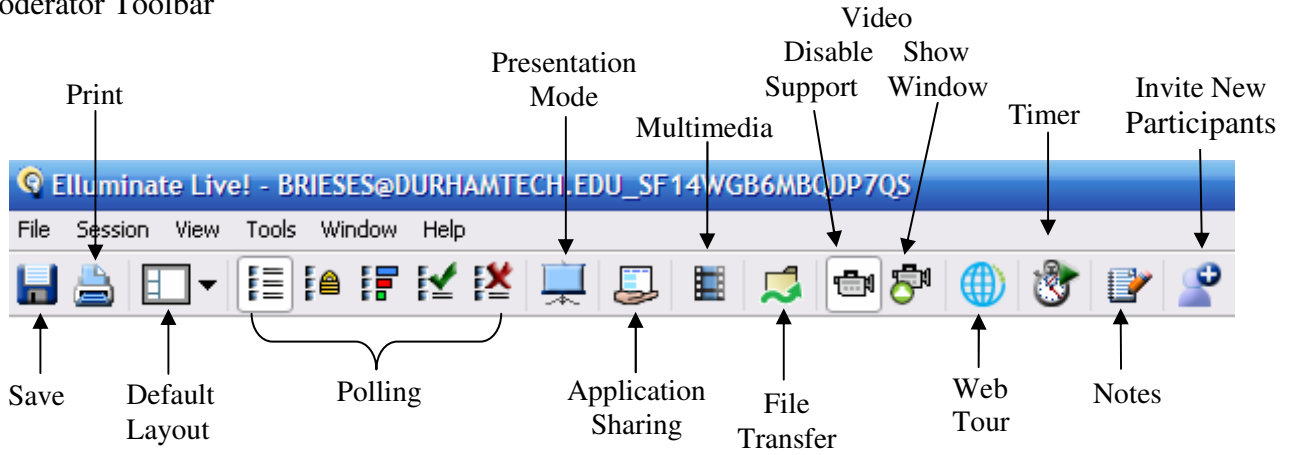


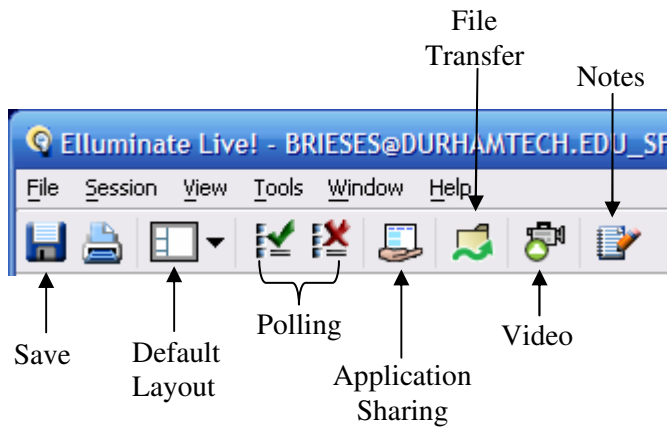
Anatomy of a vRoom

Illuminate Toolbars

Moderator Toolbar



Participant Toolbar



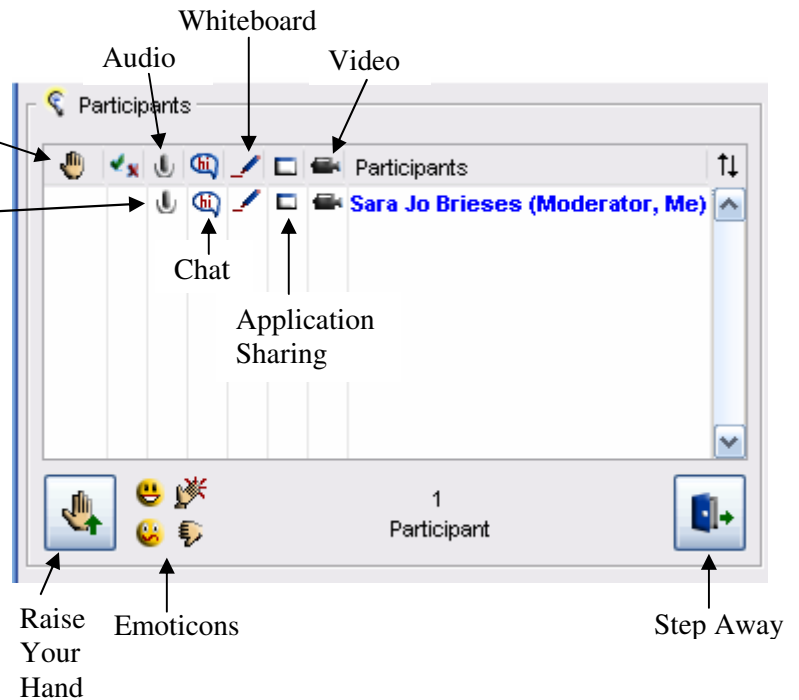
Participants Window

The Participants window shows participants name and permissions granted.

The Moderator can enable or disable permissions for Audio, Chat, Whiteboard, Application Sharing and Video.

To disable permission for all participants, click icon in the Participants row.

To disable permission for an individual, click icon next to user name.



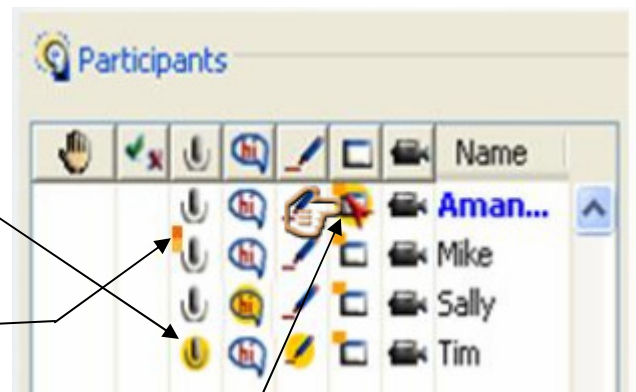
Illuminate Sensory Perception (ESP)

ESP indicator lights are designed to give the moderator the ability to know what is happening with the participants in a live session.

Yellow halo indicates in use

Red/Orange square indicates a participant has not received data or there is a delay depending on feature

Red arrow indicator shows participant controlling Application Sharing



Chat Window

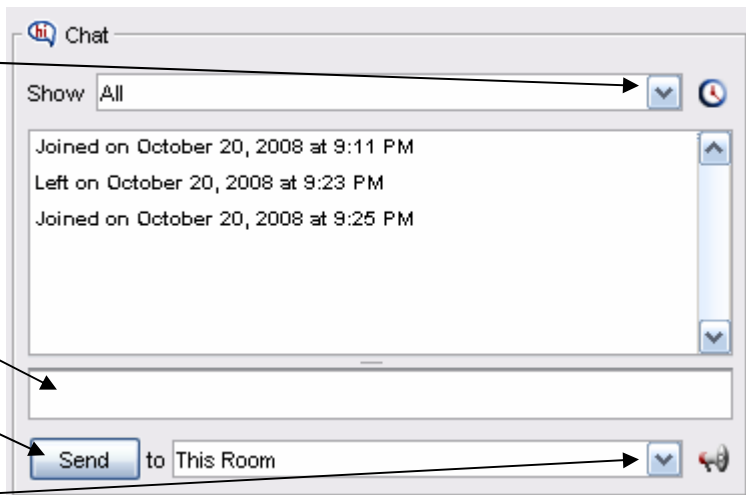
The Chat window is the communication tool for participants without audio capabilities.

Type of messages viewed in window

Enter text

Send message

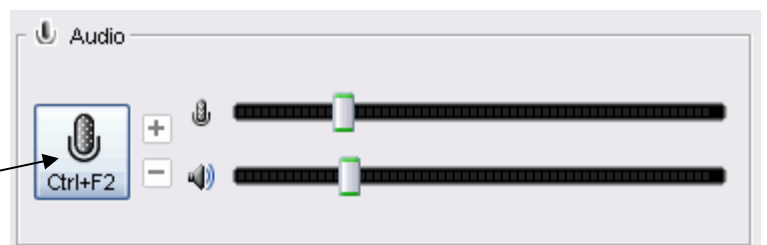
Message recipients



Audio Window

The Audio window controls the microphone and speaker volume.

Press the microphone icon to speak.
Release when finished speaking.



Note:

Elluminate strongly recommends running the Audio Setup Wizard before each vRoom session.

- ✓ Tools > Audio > Audio Setup Wizard

Elluminate defaults to one talker at a time. To allow simultaneous talkers

- ✓ Tools > Audio > Allow Simultaneous Talkers

Whiteboard

The Whiteboard allows participants with permission to enter text, draw freehand or with auto shapes, format color, group objects, highlight, add clipart, images and screen captures, and load a presentation.

Drawing Tools

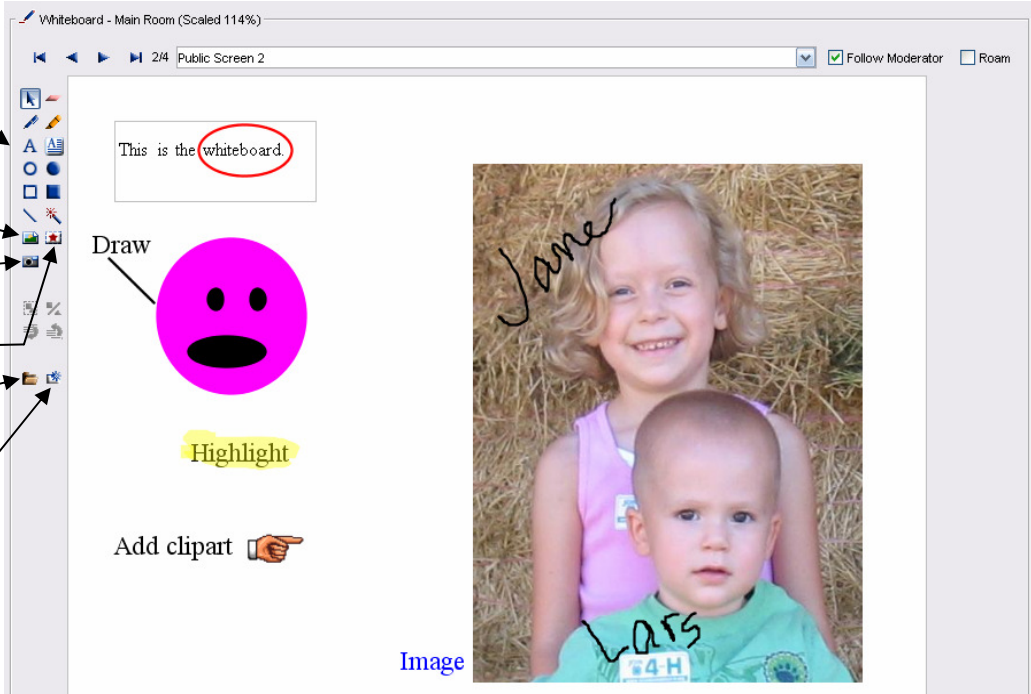
Place an image from a file on the screen

Place a screen capture on the screen

Place a clipart on the screen

Load a presentation (i.e. ppt, image, whiteboard)

Create a new blank screen



The screenshot shows a whiteboard window titled "Whiteboard - Main Room (Scaled 114%)". The interface includes a toolbar on the left with various drawing and editing tools. The main area contains the text "This is the whiteboard." with "whiteboard." circled in red. Below the text is a hand-drawn pink circle with a black mouth and eyes, labeled "Draw". A yellow highlighter tool is labeled "Highlight". A hand icon pointing to the right is labeled "Add clipart". On the right side, there is a photograph of a young girl and a baby, with the name "Jane" written in black over the girl and "LARS" written in black over the baby. The word "Image" is written in blue below the photo. The window also shows navigation controls at the top, including a "Public Screen 2" indicator and "Follow Moderator" and "Roam" checkboxes.

Whiteboard files can be saved as:

- ✓ .pdf Whiteboard PDF
- ✓ .wbd Whiteboard Files
- ✓ .wbp Protected Whiteboard Files
- ✓ .png Whiteboard PNG